

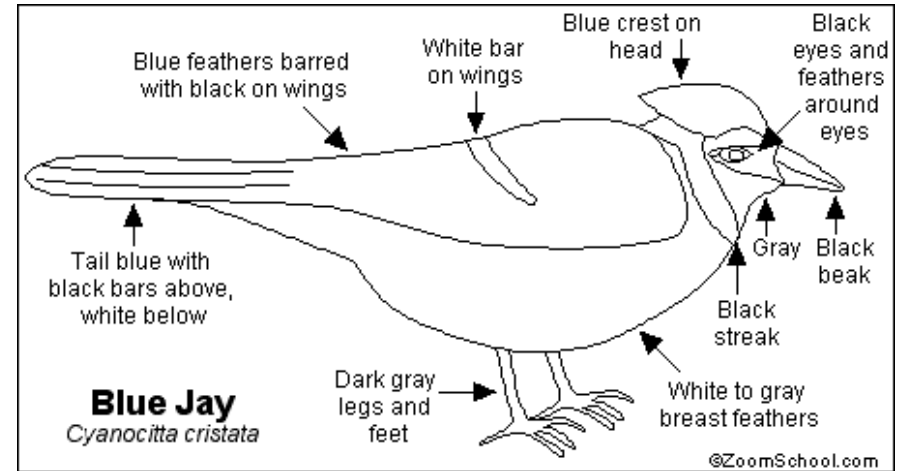
The **Downy Woodpecker** (*Picoides pubescens*) is a common, widespread woodpecker. It is found in woodlands, parks, and a variety of biomes throughout North America.

Anatomy: The Downy Woodpecker is a small, black and white bird with a short bill. The male has a red spot on the back of its head. It is about 6 to 6.5 inches (15-16.5 cm) long.

Diet: The Downy Woodpecker eats insects, seeds, grains, and suet.

Pecking: Woodpecker peck for many reasons including eating, establishing territory, attracting mates, and nesting. In order to find and eat insects that live in tree bark (including ants and beetles), woodpeckers peck into the bark with their beak, making small holes. Woodpeckers also make drumming sounds on wood, but this is to establish territories and attract mates in the Spring. A third use of pecking is to make a nest within a dead tree.

Eggs and Nests: The Downy Woodpecker's nest is a hole in a tree that has been lined with wood chips. Females lay 3-6 white eggs in each **clutch** (a set of eggs laid at one time). The eggs hatch in just under 2 weeks.

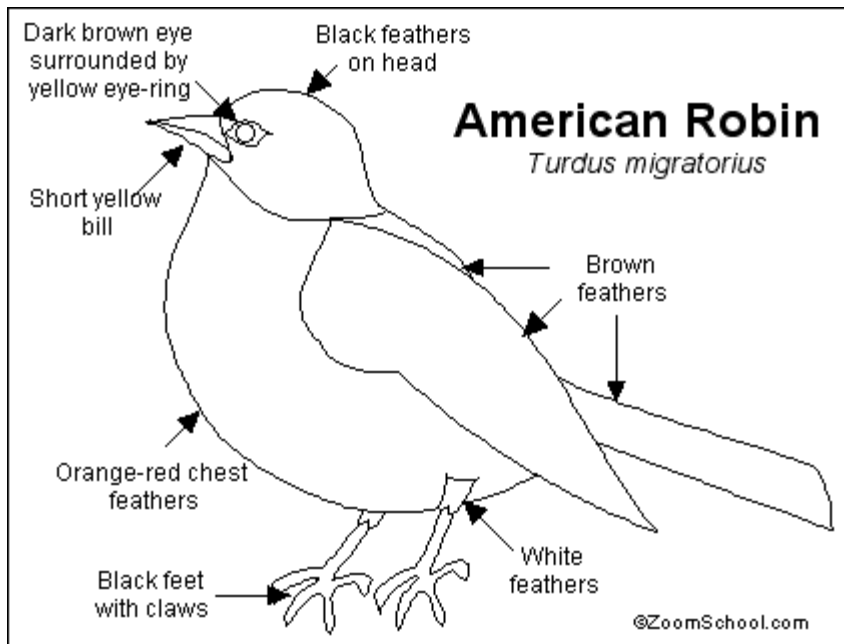


The **Blue Jay** is a common, widespread bird related to the crow. This noisy bird sings many different songs and can sound like many other birds.

Anatomy: The Blue Jay is 10-11 inches (25.5-28 cm) long. The feathers are blue and white; they have a blue head crest and a white bar on the wing. The coloration of male and females is identical - there is no easy way to tell them apart.

Diet: Blue Jays eat other birds' eggs, acorns, fruit, nuts and insects.

Nest and Eggs: Blue Jay's nests are cups made from grass, twigs and roots. Nests are built in trees and shrubs. Females lay 3-7 green-blue eggs in each **clutch** (a set of eggs laid at one time).

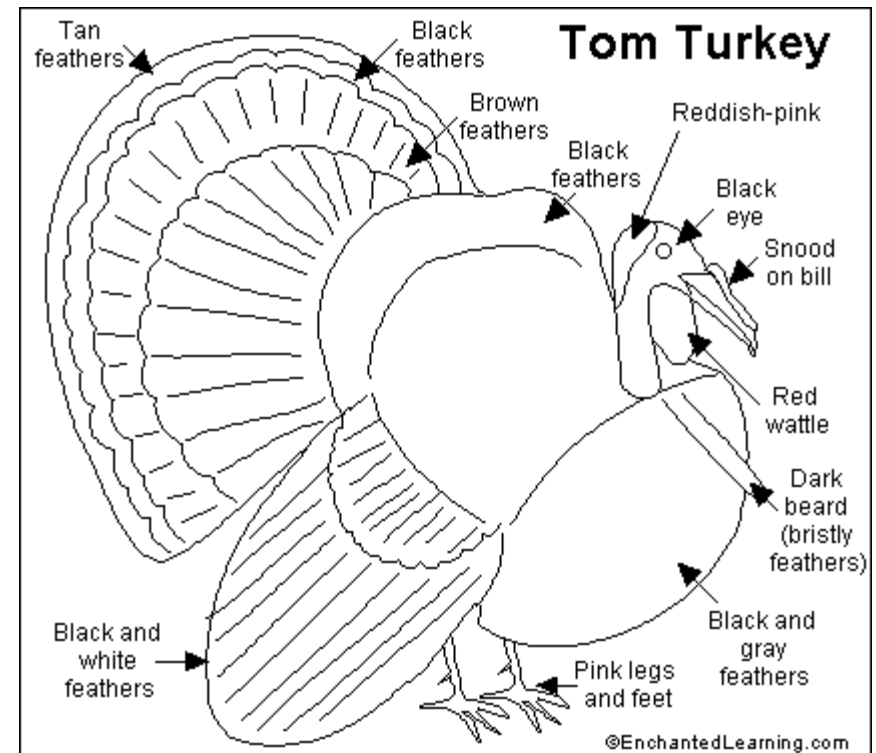


The **American Robin** is a common, widespread songbird that lives across much of North America down to Guatemala. This bird is a type of thrush; it is more closely related to blackbirds than to English robins. It was mistakenly called a robin by early American settlers.

Anatomy: The American Robin is 9-10 inches (23-25.5 cm) long. Males and females are very similar in coloring; the male's head is darker and has brighter feathers. Young robins are paler than adults and have dark spots on the chest.

Diet: Robins eat small insects, spiders, and worms.

Nest and Eggs: Robins' nests are cups made from grass and mud. Nests are built in trees and shrubs. Females lay 3-7 light blue eggs in each **clutch** (a set of eggs laid at one time). The female incubates the eggs for 12-14 days.

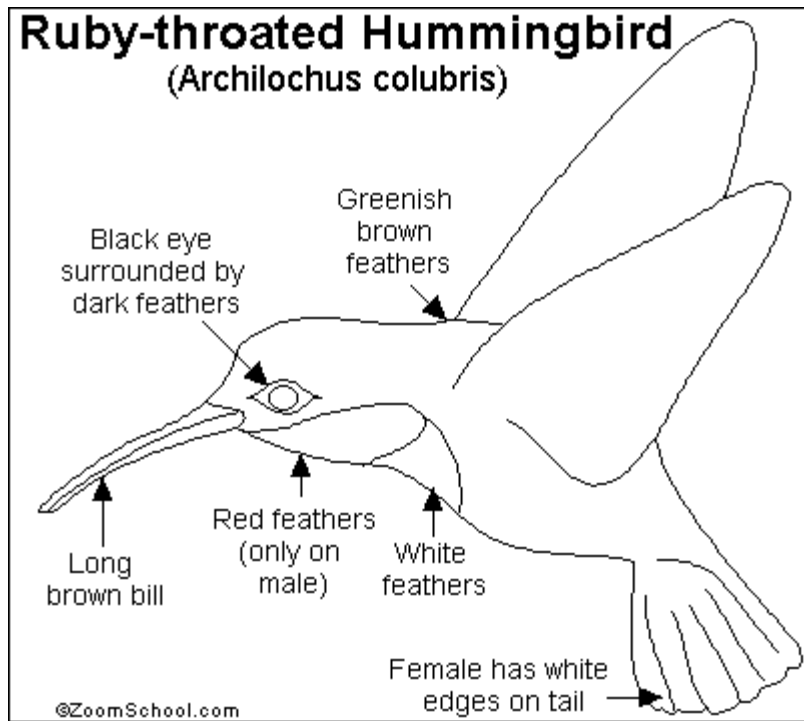


Turkeys are domestic (farm) birds that were originally bred from wild turkeys (*Meleagris gallop*). The adult female turkey is called a **hen**, the adult male is called a **tom**, and the young are called **poults**. A group of turkeys is called a rafter.

Anatomy: The tom turkey is larger and more brightly colored than the hen. Toms grow to be up to about 30 pounds (13.5 kg). Turkey eggs are tan with brown spots; they are a little bigger than chicken eggs. Poults are brown.

Diet: Turkeys have a varied diet. They eat insects, worms, fruit, seeds, acorns, grains, slugs, snails, and many other foods. They have a well-developed **gizzard** (a part of the stomach that contains tiny stones) that grinds up their food.

Predators: Many animals prey upon turkeys, including skunks, owls, raccoons, hawks, bobcats, and snakes.

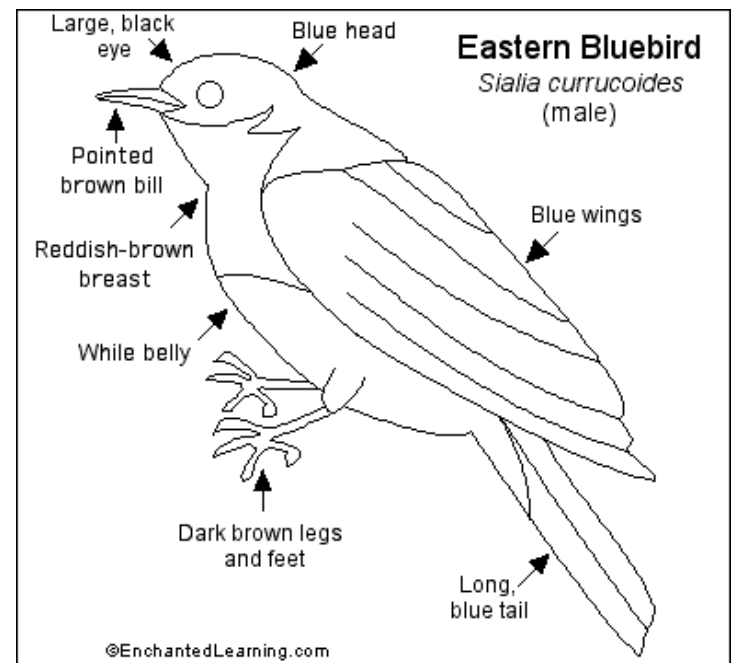


The **Ruby-throated Hummingbird** is a small bird that lives throughout eastern North America. Its scientific name is *Archilochus colubris* (Genus and species). These beautiful birds migrate south to Mexico in winter to find food. They can fly forwards and also hover in mid-air. Their tiny wings beat about 55 to 75 times each second!

Anatomy: The Ruby-throated Hummingbird is about 3 1/2 inches (8 cm) long. The male has bright red throat feathers (called a **gorget**) and metallic-green feathers on the top of the body with whitish feathers below. The female is mostly brownish on top and whitish on the bottom; her tail is rounded and edged in white.

Diet: Ruby-throated Hummingbirds sip sweet nectar from flowers and eat some tiny bugs.

Nest and Eggs: Ruby-throated Hummingbirds make their tiny nests from lichens, spider webs, and plant down (fluffy seed coverings). Females lay two white eggs in each **clutch** (a set of eggs laid at one time).

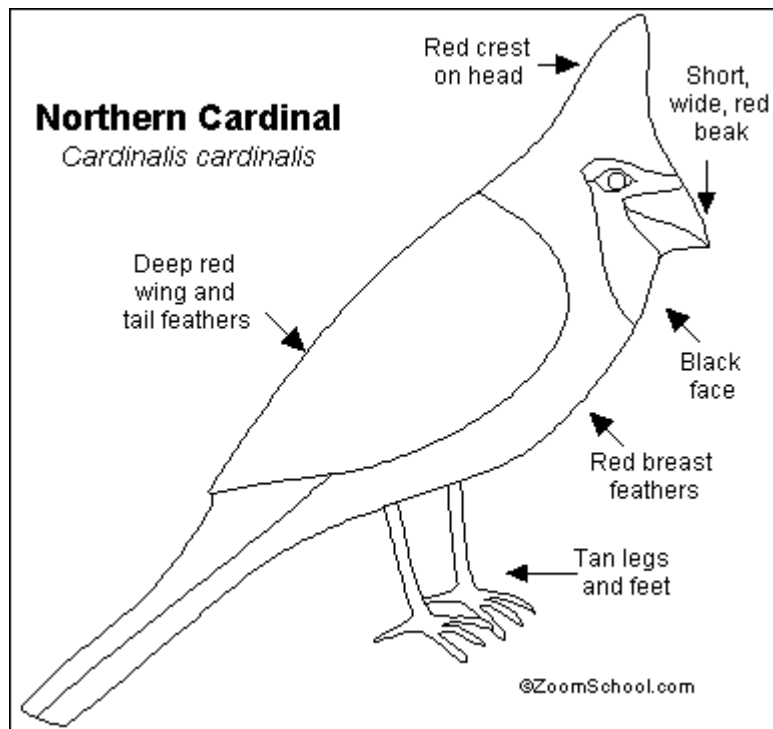


The **Eastern Bluebird**, *Sialia sialis*, is a blue songbird that sings a melodic warble. This beautiful member of the thrush family lives in the eastern half of the USA and in southern Canada, ranging from the Atlantic coast to the Rocky Mountains. Its numbers have been decreasing greatly in the last few decades. The Eastern Bluebird has a life span of about 6 years.

Anatomy: The Eastern Bluebird is about 5.5 to 7 inches (14-18 cm) long and has a wingspread of 11 to 13 inches (28-33 cm). The bill is thin. Males have bright blue feathers above, an orange-red throat and breast, and a white belly. Females are camouflaged; they have dull blue wings and tail, a gray head and back, a brown breast, a white eye ring, and a white belly.

Diet: The Eastern Bluebird mostly eats insects (especially grasshoppers, crickets, katydids, and beetles), worms, snails, and spiders; it also eats fruit.

Nest and Eggs: Eastern Bluebird nests are cup-like and are made from dried grass, pine needles, and plant stems. Nests are built in holes in trees and rotted tree stumps. Females lay 3-6 pale blue eggs in each **clutch** (a set of eggs laid at one time). The female incubates the eggs for 12-14 days. Both parents care for the hatchlings for 15-20 days, when the young leave the nest.

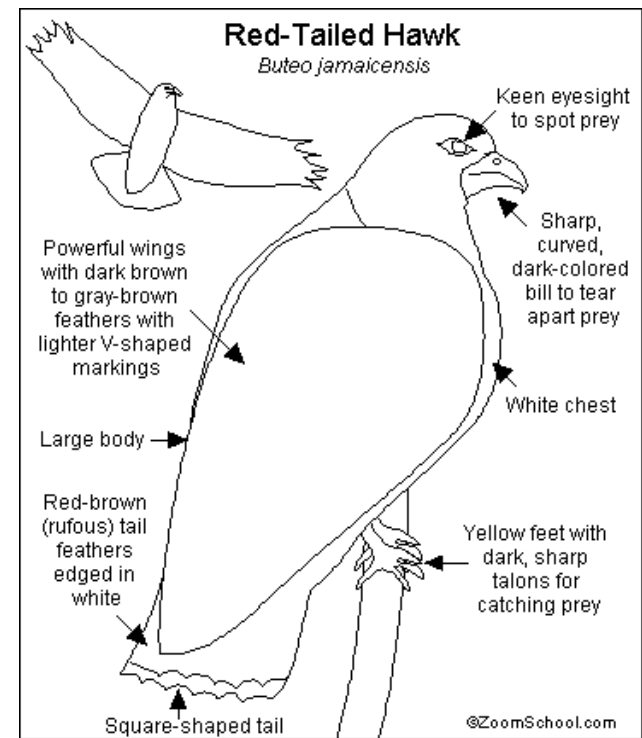


The **Northern Cardinal** is an easily-spotted red bird from the eastern USA. The cardinal was named by early American settlers, after Catholic cardinals who dress in bright red robes. These birds are strongly territorial and have a loud, whistling song.

Anatomy: The Northern Cardinal is 8-9 inches (20.5-23 cm) long and has a wingspread of 10 -12 inches (25-31 cm). It weighs from 1 to 2 ounces (28-57 gm). It has a short, wide bill. Males have brilliant red feathers, a tall head crest, a wide, red bill, and a black face. Females and juveniles are gray-olive above and paler below, with some deep red on the crest, wings, and tail, and a bright pink-to-orange bill.

Diet: Cardinals eat seeds, insects, snails, and maple sap.

Nest and Eggs: The Cardinal's nests are bowl-like and made from grass and twigs. Nests are built in bushes. Eggs are whitish with brown and gray marking; females lay 2-5 eggs in each **clutch** (a set of eggs laid at one time).

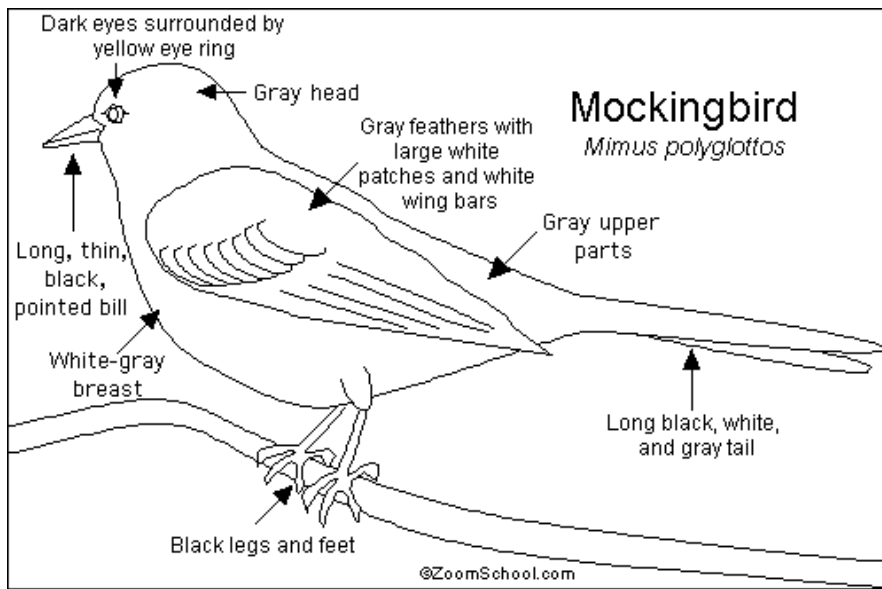


The **Red-Tailed Hawk** (*Buteo jamaicensis*) is the most common and widespread hawk in North America. This raptor, a bird of prey, is a powerful flier that lives in swamps, taigas, deserts, and a variety of biomes.

Anatomy: The Red-Tailed Hawk is about 19-23 inches (48-58 cm) long. It weighs about 2.5 pounds (1 kg), with wingspan of 4 to 4.5 feet (1.2-1.4 m). The plumage (feathers) varies a bit, but is generally brown to gray brown with paler markings, and with a white chest. The tail feathers are red-brown (rufous) and square-cut.

Diet: The Red-Tailed Hawk is a carnivore (a meat-eater) who often catches its prey while flying, killing it with sharp talons. It eats rodents (like mice, muskrats, and squirrels), opossums, moles, weasels, reptiles (like snakes), amphibians, and other birds (like pigeons, quail, crows, ducks, and woodpeckers). The hawk eats the entire prey, regurgitating inedible parts, like fur, feathers, teeth, and bone.

Nest and Eggs: The Red-Tailed Hawk's large nest is built out of sticks, bark and leaves, and is located high in a tree. The female lays 1-5 white eggs speckled with brown in each **clutch** (a set of eggs laid at one time). Both parents incubate the eggs.



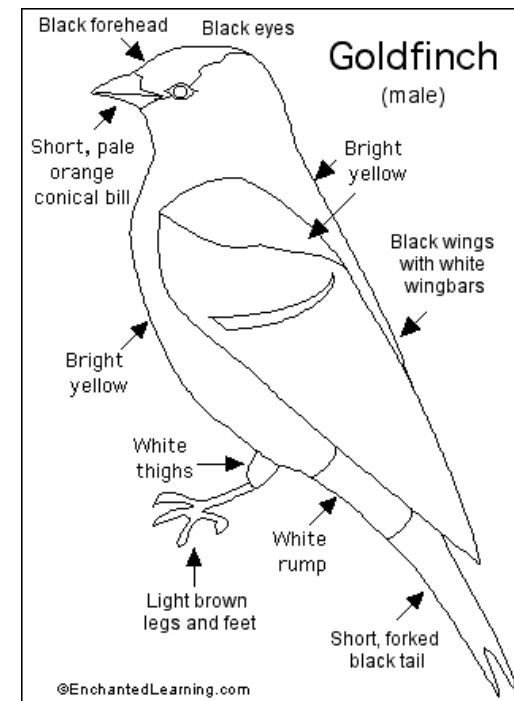
The **Mockingbird** is a common songbird that is found across North America. It is the state bird of Tennessee. It lives in a variety of habitats, including farmlands, roadsides, thickets, and towns.

Song: The Mockingbird has a variety of calls. It mimics many other birds' calls, and can sing for hours. Its scientific name, *Mimus polyglottos*, means "Mimic of many tongues."

Anatomy: The Mockingbird is from 9 to 11 inches (23 - 28 cm) long. It has a slim body, a long bill and a relatively long tail (up to 6 inches = 15 cm long). The wing span is 13 to 15 inches (33-38 cm). It weighs from 1 to 2 ounces (28-56 g). The Mockingbird is mostly gray, with large white patches on the wings and tail. Males and females are similar in appearance. The juvenile has a spotted breast.

Diet: The Mockingbird eats fruit, insects (like grasshoppers and beetles), spiders, and other small animals (like crayfishes, snails, lizards and snakes).

Nest and Eggs: The Mockingbird's nest is made of twigs, moss, and grass, and is lined with feathers. The nest is from 3 to 10 feet (1-3 m) high, located in trees and shrubs. The female lays 3 to 6 greenish eggs with dark spots in each **clutch** (a set of eggs laid at one time). Mockingbirds will ferociously protect their eggs and young; they will even swoop down and attack cats or people.



The **American goldfinch**, *Carduelis tristis*, is a small, brightly-colored North American bird that is sometimes called the wild canary. This little bird lives in brushy thickets, seed-bearing trees, and weedy grasslands. It ranges from Mexico to southeastern British Columbia to Newfoundland. In winter, goldfinches gather in large flocks, as they fly to warm areas, including the Gulf of Mexico and southern Mexico. The song is high-pitched and long.

Anatomy: The goldfinch is from 4 1/2 to 5 inches (11-14 cm) long. Males are bright yellow with a black forehead, a white rump, and the wings and tail are black with white edges. Male coloration in the winter is duller. Females are camouflaged with duller colors; they are gray with black wings, white wing bars, and a notched tail. The bill is stubby.

Diet: Goldfinches mostly eat seeds (insects are also eaten).

Nest and Eggs: The goldfinch nests in a small tree or shrub; nests are located on a fork in a branch. Nests are open cups made from grass, bark strips, and other plant material. Nesting starts in middle to late summer (when seeds are readily available). Females lay 4-5 pale blue eggs in each **clutch** (a set of eggs laid at one time). The incubation period is 10 to 12 days.